

Should be used by specialist in termite control. Must wear masks and appropriate protective equipment.

Shake the container before each use.

- dilutions of 1 part SCEA Wazary SC : 80 parts water (5 years structural protection)
- dilutions of 1 part SCEA Wazary SC : 200 parts water (4 years structural protection)

Stir well before use and used up all at once. Should not be stored for use in the next time.

#### Pre-construction Treatment

After flatten the area, use SCEA Wazary SC according to the above diluted ratio pour or spray into the soil around the area to be poured concrete by using a low-pressure sprayer (about 25 pounds per square inch) at the rate of 5-6 liters per 1 square meter, concrete floors should be poured within the same day. (If unable to complete the concrete slab that day Use polyethylene plastic sheeting to cover the area.) After that, pour or spray SCEA Wazary SC around the concrete line

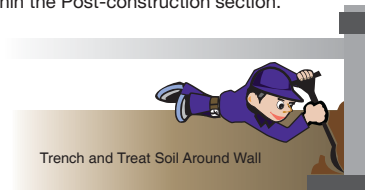
1. Use a rodding to inject SCEA Wazary SC into the soil at the rate of 5 - 6 liters per 1 meter length (30 centimeters deep) or
2. Dig a trench not more than 15 cm wide and 30 cm deep. Mix the soil dug from the trench with SCEA Wazary SC at the rate of 5-6 liters per 1 meter of trench length. Then take the soil that has been mixed put back into the trench or may use a gradual approach put the soil back into the trench and pour SCEA Wazary SC to the soil all over while put back in the trench with the above rate

#### Post-construction Treatment

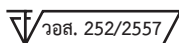
Drill holes in the floor of the building and concrete floors around to be separated from each point approximately 20 - 30 centimeters. Spray SCEA Wazary SC in the above diluted ratio. Using a low pressure sprayer (about 25 pounds per square inch) into the concrete floor. Pierced in both and outdoors building at the rate of 5 liters per hole.

#### Remedial and Spot Treatments

If there is evidence of termite re-infestation after the initial treatment resulting from disruption of the chemical barrier that can arise due to human activity such as excavation, construction and landscaping, or simply following an incomplete initial treatment, retreatment should be made in these areas in accordance with the application techniques described within the Post-construction section.



Please Read and Follow  
Product Label Directions and  
Precautions Before Use.



#### Contact Us For More Information

**Sumitomo Chemical Asia Pte Ltd**  
3 Fraser Street, #07-28 DUO Tower  
Singapore 189352  
Tel : (65) 6303 5188  
Fax : (65) 6298 9621

**Sumitomo Chemical Philippines Inc**  
Unit 4C, 4<sup>th</sup> Floor, MAPFRE Insular Corporate Center  
1220 Acacia Avenue, Madrigal Business Park, Ayala Alabang  
Muntinlupa City  
1770 Philippines  
Tel : (632) 885 067180  
Fax: (632) 885 063032

**Sumitomo Chemical (Thailand) Co. Ltd**  
Level 35, Unit 3505, Exchange Tower  
388 Sukhumvit Road  
Klongtoey, Bangkok 10110  
Thailand  
Tel : (66) 2663 4337  
Fax : (66) 2663 4336

**Sumitomo Chemical Enviro-Agro Asia Pacific Sdn Bhd**  
Lot 62A, Persiaran Bunga Tanjung 1  
Senawang Industrial Park  
70400 Seremban, Negeri Sembilan  
Malaysia  
Tel : (606) 679 3711  
Fax : (606) 679 3698

**Sumitomo Chemical Vietnam Co., Ltd**  
Floor 5, 40 Pham Ngoc Thach Street, Ward 6  
District 3, Ho Chi Minh City  
Vietnam  
Tel : (028) 3822 0127, (028) 3822 0129  
Fax : (028) 3822 0131

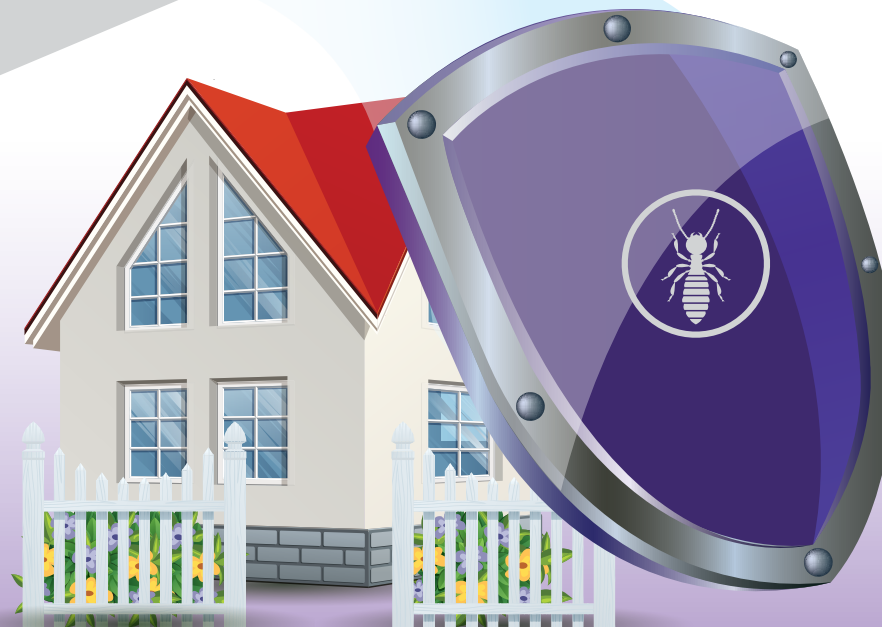
<https://www.sumitomo-chem-envirohealth.com>

#### Disclaimer

The statements, technical information and recommendations contained herein is to be used only as a guide to assist with the product selection and Sumitomo Chemical makes no representation or warranty as to the completeness or accuracy of the information contained herein. The products and specifications set forth in this brochure are subject to change without notice and Sumitomo Chemical disclaims any and all liability for such changes. Since the conditions and methods of use of the product and of the information referred to herein are beyond our control, Sumitomo Chemical expressly disclaims any and all liability as to any results obtained or arising from any use of the product or reliance on such information; NO WARRANTY OF FITNESS FOR ANY PARTICULAR PURPOSE, WARRANTY OF MERCHANTABILITY OR ANY OTHER WARRANTY, EXPRESSED OR IMPLIED, IS MADE CONCERNING THE GOODS DESCRIBED OR THE INFORMATION PROVIDED HEREIN. IN NO EVENT WILL SUMITOMO CHEMICAL BE LIABLE FOR ANY INCIDENTAL, INDIRECT OR CONSEQUENTIAL DAMAGES ARISING FROM THE SALE OR USE OF ANY PRODUCT.

The information provided herein relates only to the specific product designated and may not be applicable when such product is used in combination with other materials or in any process. All sales of products shall be subject to Sumitomo Chemical's Standard Terms and Conditions of Sale, a copy of which will be provided by Sumitomo Chemical upon request.

\*Sumitomo Chemical as used herein refers to Sumitomo Chemical Asia Pte Ltd, each and any subsidiary or holding company from time to time of that company, whether existing now or in the future.



**Termite Defence for Your Home**  
Based on efficacy test in Thailand





## SCEA Wazary® SC

is a water-based flowable (suspension) concentrate, an active ingredient Fenvaterate 10.0% which greatly reduces the risks associated with using oil-based termiticide formulas. The main active isomer of SCEA Wazary® SC containing very high Koc value (soil binding capacity) of 630,597, meaning highly absorbable from water into organic material within soil, allowing it to create a more effective and long residual anti-termite barrier treatment.

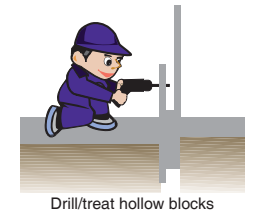
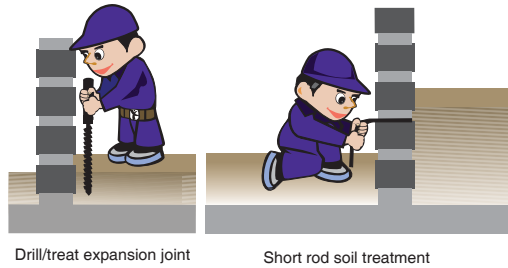
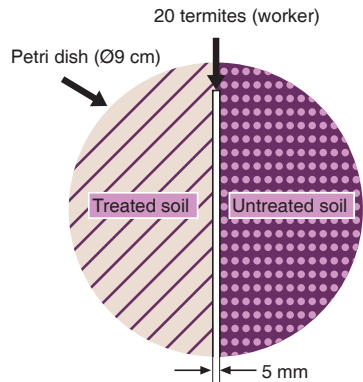
It is a repellent termiticide and virtually odourless.

SCEA Wazary® SC has also been approved for use in water catchment areas by Singapore's National Environmental Agency (NEA).

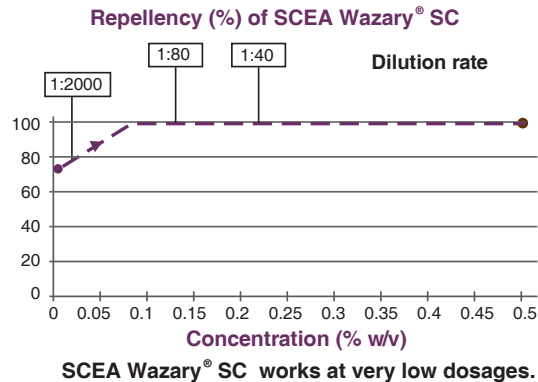
### Test method (RepellencyTest)

Awet filter paper was placed in a Petri dish. One half of the surface of filter paper was covered with 5g of soil treated with SCEA Wazary® SC and the other half was covered with 5g of untreated soil. Treated and untreated soils were separated by 5mm as figure shown below.

Twenty Formosan subterranean termites were released in the centre part, between the treated and untreated soil. Therresults are shown in the table below.



Repellent Efficacy of SCEA Wazary® SC		
Product	Concentration as a.i. (%)	Repellency (%)
SCEA Wazary® SC	0.5	100
	0.25	100
	0.05	88
	0.005	75
Control	0	0



## Why Choose SCEA Wazary® SC

- Long residual efficacy
- Strong repellent and kill efficacy
- Perimeter treatment
- No odour
- Pre- and post-construction treatment
- Protection of building against subterranean termites
- Excellent environmental profile
- Easy to store and handle

### Regulatory and Technical Support

With a broad and extensive technical experience in the Environmental Health division, we offer the comprehensive product registration package as well as technical support with best use of innovative technologies and formulations to our growing client base from our regional laboratory in Seremban, Malaysia.

Field test of SCEA Wazary® SC on subterranean termites conducted by the Royal Forest Department, Thailand showed that if applied at 1 : 40, SCEA Wazary® SC gives 5 years protection.

Test method according to the efficacy testing method of spraying or pouring termite prevention products (field testing)

Testing Chemical	damage (%)				Average damage (%) on 4 replications
	1	2	3	4	
SCEA Wazary® SC Concentration 0.2625% 1 part SCEA Wazary® SC: 40 parts water	0.00	0.00	0.00	0.00	0.00
Control	100.00	50.00	0.00	60.00	52.50

Average damage for the Control replicates over this same period was 52.50%.

For long-term protection, SCEA Wazary® SC should be diluted at the rate of 1 part : 40 parts water and applied according to label recommendations. For shorter term control, dilutions of 1 part SCEA Wazary® SC : 200 parts water